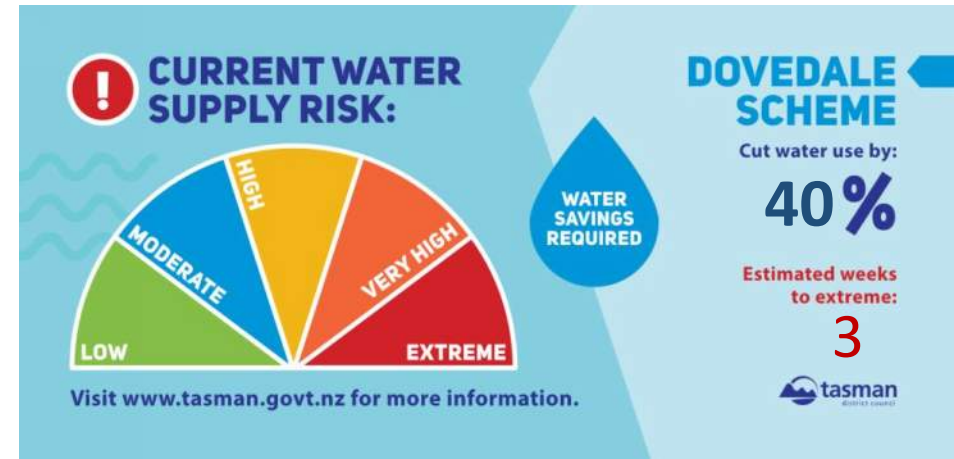




DOVEDALE WATER SUPPLY SUPPLY

- Purpose of public meeting
 1. Overview
 2. Discuss drought impacts
 3. Collaborative approach to best manage water demand
- Partner agencies include
 - Dovedale Rural Water Supply Committee and:





- Situation Report FENZ
- Ian Reade (Principal Rural Fire Officer) provides a situation report about the status of the Pigeon Valley Fire:
 - cordons
 - Evacuations
 - perimeter
 - containment
- Do not to use fire-fighting supplies for domestic or stock purposes



OVERVIEW

- No significant rain since December (10.5mm in 52 days)
- Stock requirements on Dovedale schemes is high, concerns of overstocking
- Not complying with rationing
- Cease take order – means water for household and stock only (no water for gardens or irrigation of any sort)
- Potential for further rationing and restrictions (implications for stock)
- Ongoing fire response (resources are stretched to ensure continuity of firefighting water supply)
- Water tankers are also stretched
- Illegal connections and tampering with restrictors affects others

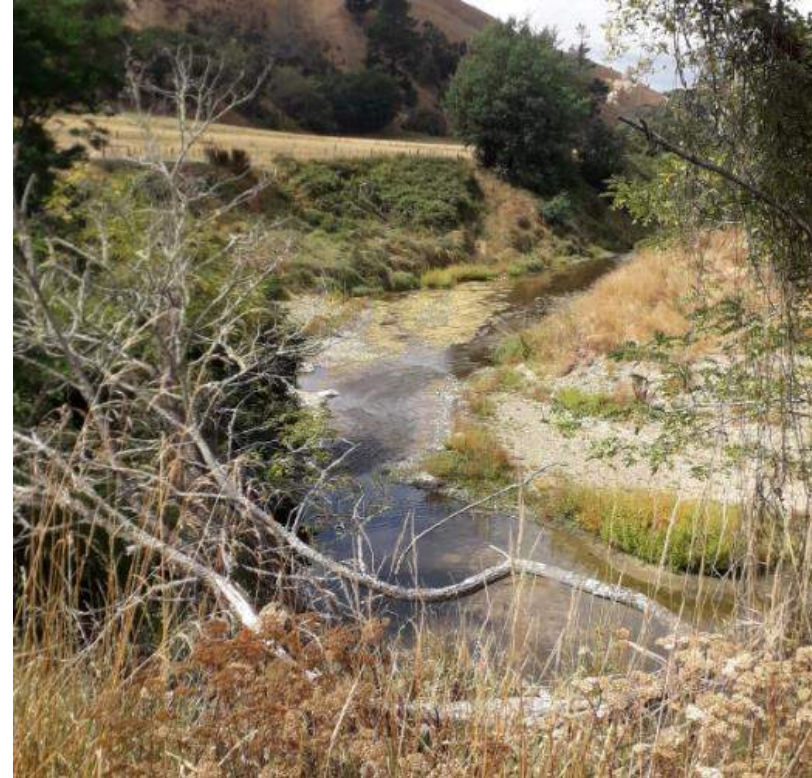


SCHEME SOURCE (UPPER INTAKE)





LOWER INTAKE & DOVE RIVER





WOODSTOCK RAINFALL

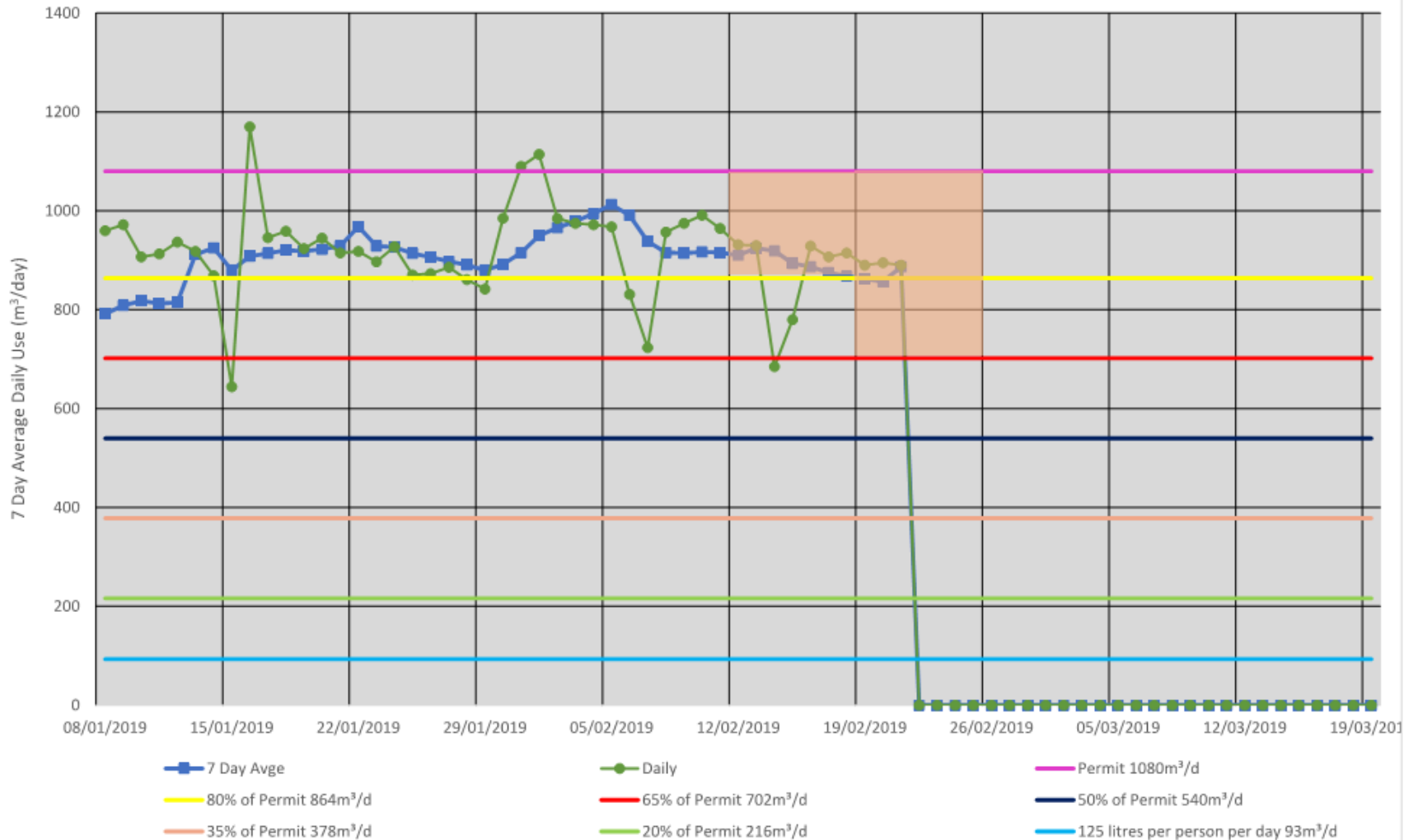
Woodstock Rainfall (mm): Oct-Feb. Average compared to 2018/19





WATER USE

Dovedale Water Use (7 day rolling average) as at 21/02/2019



RISKS

- Compliance - restrictions
- Cease take (human needs and stock only)
- May be further rationing
- Supply unable to keep up with demand

Formulate a framework for managing water demand



ANIMAL WELFARE (MPI/Federated Farmers)

- Plan ahead
- As water availability becomes critical, farmers need to have steps in place to manage the health and welfare needs of their stock. This should include trigger points and key dates to reduce stock numbers
- Alternative grazing outside of the district is limited and processing space at the works is tight
- Seek advice from MPI, vets, farm consultants, stock and feed agents
- If you require grazing you can apply online www.fedfarm.org.nz matched up with farmers offering grazing
- Look after yourselves. The Rural Support Trust can provide confidential pastoral support to farmers and their families. Call 0800 787254
- Our aim is to help you plan and adapt to the drought so that you can quickly return to a fully productive state when conditions ease



KEY MESSAGES

- The drought is serious, no significant rain since December and little in forecast
- Flow in the stream is dropping
- Need to comply with restrictions
- Uncertain about what will happen over coming weeks and months without rain
- Destock now to align to 70% of your allocation
- Plan ahead for further destocking
- Plan ahead for the possibility of human needs only cease take



CONTACT DETAILS

Agency	Contact Person	Phone Number
Dovedale Water Supply Committee Chair	James Stradling	021 125 8786
Federated Farmers	Martin O'Connor	021 522 485
Fire and Emergency New Zealand	Rob Dalton	0274 956 691
Ministry for Primary Industries	Phil Kirk	0274 392 187
Ministry for Primary Industries	Wayne Ricketts	0274 759 232
Rural Support Trust	Edwin Newport	0275 224 325
Tasman District Council	Mike Schruer	(03) 543 8686

Ministry for Primary Industries
Manatū Ahu Matua

MEETING THE CHALLENGES

Key points for getting through droughts

CONTACTS FOR INFORMATION AND ADVICE

FEDERATED FARMERS	0800 376 844
RURAL SUPPORT TRUSTS General Enquiries	0800 787 254
WORK AND INCOME Welfare Support	0800 559 009
INLAND REVENUE Taxation Matters	0800 227 774
LIFELINE Counselling	0800 543 354

INTRODUCTION
The current drought is not the first, nor will it be the last to hit the farmers and growers of New Zealand. While droughts affect every farmer and grower directly, some survive, recover and prosper better and more quickly than others. Over the years, much has been written about why this may be so. It seems timely to revisit the lessons learnt from past droughts in New Zealand so that the farming industry and support services can collectively get through the current situation and recover when conditions improve.

This pamphlet outlines the key factors that contribute to improving the strength and sustainability of the recovery of farming businesses from droughts. Information is provided on the types of assistance available and where to go to get help.

OTHER INFORMATION SOURCES
www.mpi.govt.nz/environment-natural-resources/funding-programmes/primary-sector-recovery/draughts.aspx
www.beeflambnz.com/farm/tools-resources/dry-management-toolkit/
www.dairynz.co.nz/drysummer
www.irrigationnz.co.nz

www.mpi.govt.nz

Growing and Protecting New Zealand